

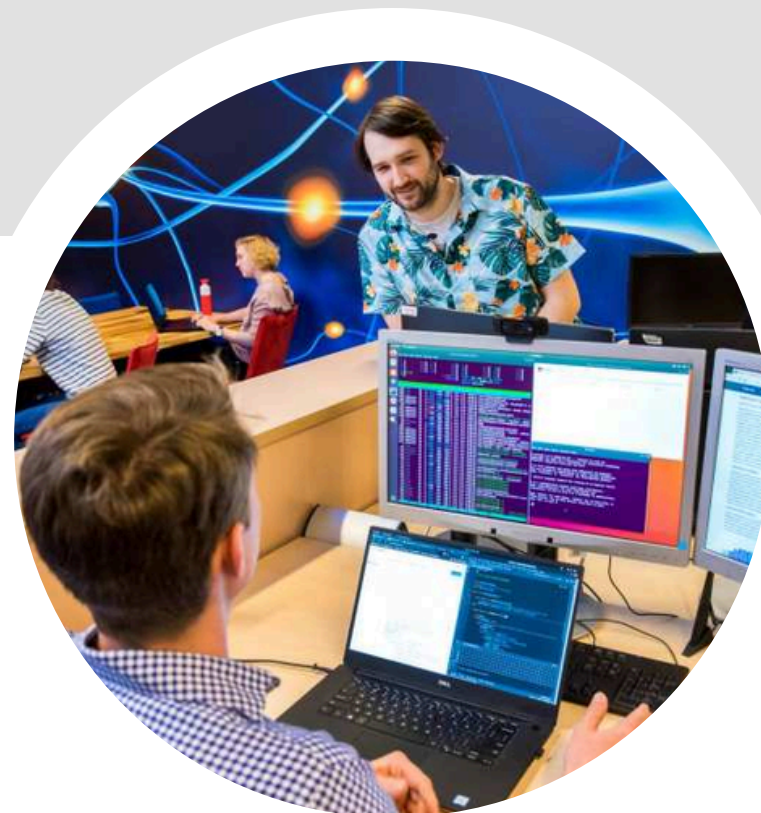
WAYS TO WORK TOGETHER

RESEARCH & INNOVATION COLLABORATION

ADVANCED PRACTICAL PROJECT

A four to five-month group project exclusive to the **Data Driven Decision Making minor**, where students analyze complex business challenges and develop data-driven solutions.

[Read more about the minor](#) ↗



MASTER CONSULTANCY PROJECT

A one-year project where **Master Circular Economy** students work as junior consultants in pairs, dedicating approximately 50% of their time to researching and advising on a complex sustainability issue. Some work is done on-site.

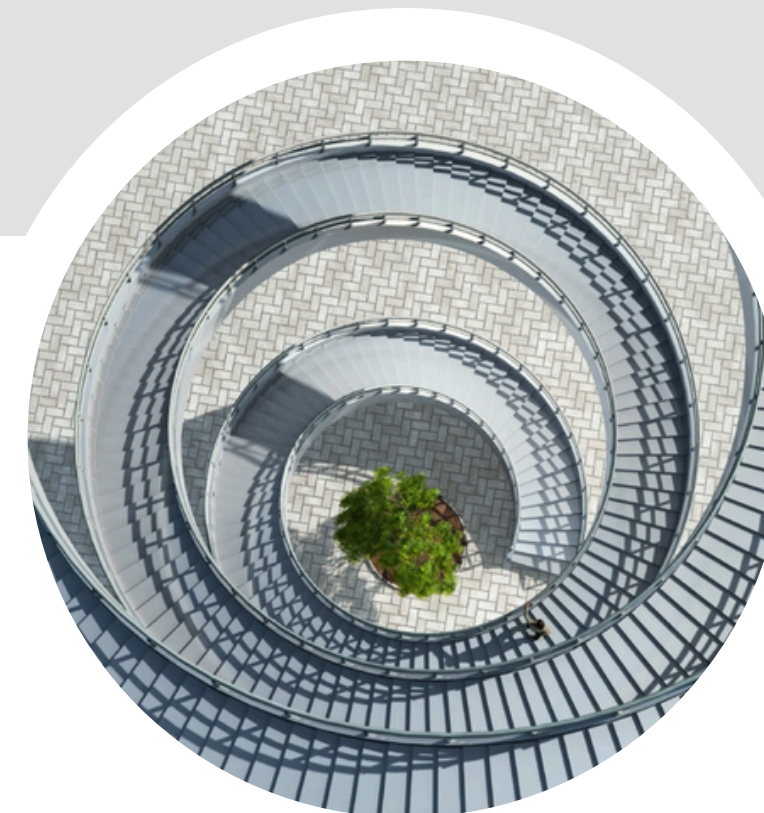
[Read more about the masters](#) ↗



CO-CREATION RESEARCH PROJECTS

Long-term collaborative projects where businesses, students, lecturers, and researchers work together to address knowledge-based sustainability challenges, guided by our very own **Center of International Business Research**.

[Read more about CIBR](#) ↗



Interested? Contact us!



international.business.connections-isb@han.nl